

# Luxury professional clipper **VOLARE X2 FX811E**

Exceptional efficiency, run time, power  
and cutting performances



## FERRARI DESIGNED HIGH-TORQUE ENGINE



Inspired by the quality and performance of FERRARI and the engineering excellence of BaByliss PRO, a combination of 140 years of world industry leader experience, BaByliss PRO introduces the finest quality professional clipper: VOLARE X2.

Driven by ultra-efficient, high-speed, MaxLife PRO engine technology, this clipper was designed and built exclusively for BaByliss PRO with its specially constructed blade cutting system.

### About MaxLifePRO technology

Typical motors require carbon brushes, which cause friction, and are ultimately worn down over the life of the styling tool. Once the brushes are depleted, the motor will fail. We have eliminated the carbon brushes and replaced them with 4 powerful, rare earth magnets.

This advancement allows us to produce engines that

- are **lighter**
- feature **ultra-low vibration**
- have a tremendously **longer lifespan**

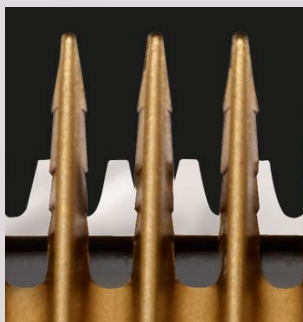
**maxlife**  
PRO

► **MaxLife PRO brushless engines will last up to 10 000 hours !**

### About the micro-serrated X-Grip blade

It's a new high technology cutting process. A Titanium-coated fixed blade, a high-carbon steel X-Grip cutter.

► **Cuts 2x faster on 1st pass**



Cutting frequency: **6300** movements of blade per minute

**BaByliss® PRO**



### About the Lithium Polymer battery

- ▶ High-capacity enabling motor to run for extended time and provide strong power and torque
- ▶ High-efficiency
- ▶ Superior power




### 3 hours cordless run time without recharge

An exceptional autonomy reached in a 3-hour quick charge only.

- ▶ **Gives the stylists exceptional flexibility and freedom**

### About the smart LED

VOLARE X2 is provided with a 3-stage battery indicator:

-  **Red:** charging
-  **Blue:** full charge
-  **Slow Flashing Red:** early warning indicates the unit will soon need to be charged
- Rapid Flashing Red:** indicates only 10 to 15 minutes more run time

### Cutting height adjustment

The blade is adjustable in 4 stages from 0.8 mm to 2.0mm, in 0.4 mm steps. It is provided with 8 attachments (3 – 6 – 10 – 13 – 16 – 19 – 22 – 25mm)

- ▶ **Up to 32 precision settings**

### Comfort, lightweight and ergonomics

MaxLife PRO engines are much lighter than typical ones; this reduces the weight of the device itself.

MaxLife PRO engines are also provided with 2 sealed ball-bearings which reduce vibration.

VOLARE X2 was designed with the hairstylist's comfort in mind and its ergonomics and lightweight allow to reduce tensions and muscular pains.



### Cord / cordless operation

Includes lubricating oil and cleaning brush

**1-year warranty + 1-year warranty on engine**

EAN barcode 3030050085037

**BaByliss® PRO**